

Flygt 2250.011

Table of Contents

1 Introduction.....	2
1.1 Specially approved products.....	2
2 Product Description.....	3
2.1 Products included.....	3
2.2 The data plate.....	3
2.3 Product denomination.....	3
3 Exploded View.....	5
3.1 2250.011.....	5
3.2 Cable entry, connection housing, and labels.....	6
4 Spare Parts.....	7
4.1 2250.011.....	7

1 Introduction

Purpose of this manual

The purpose of this manual is to provide necessary information on spare parts and accessories order.

Disclaimer

Always use genuine Flygt parts. The use of other spare parts or accessories can invalidate any claims for warranty or compensation. Xylem does not take any responsibility for damages that are caused by the use of non-original parts. For more information, contact your local sales and service representative.

Data for ordering spare parts

The following information is needed for spare part orders:

- Serial number of the product
- Part number
- Quantity of bulk material, see * in tables

1.1 Specially approved products

Qualification of personnel

Only Xylem or Xylem-authorized service personnel may undertake repair work on specially approved products.

Dimensional accuracy inspection

Spare parts marked with (Ex) after the part number are subject to dimensional accuracy inspection when used in specially approved products.

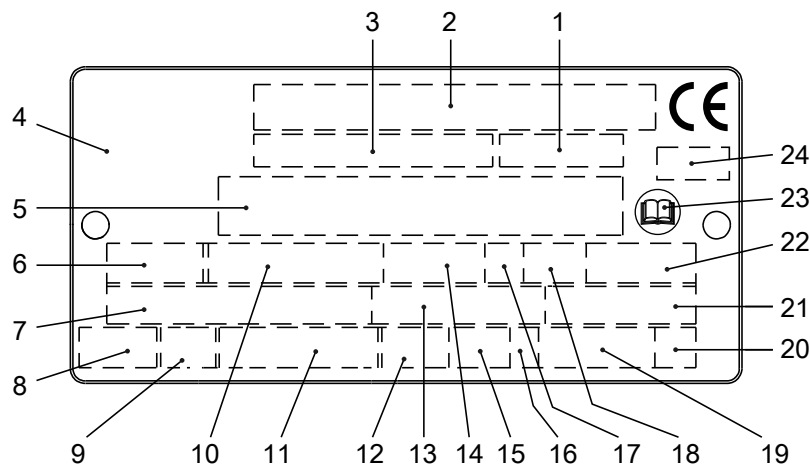
2 Product Description

2.1 Products included

Pump model	Standard	EX	MSHA	Drainage	Sludge
2250.011	X			X	

2.2 The data plate

The data plate is a metal label that is located on the main body of the products. The data plate lists key product specifications. Specially approved products also have an approval plate.



1. Curve code or Propeller code
2. Serial number
3. Product number
4. Country of origin
5. Additional information
6. Phase; type of current; frequency
7. Rated voltage
8. Thermal protection
9. Thermal class
10. Rated shaft power
11. International standard
12. Degree of protection
13. Rated current
14. Rated speed
15. Maximum submergence
16. Direction of rotation: L=left, R=right
17. Duty class
18. Duty factor
19. Product weight
20. Locked rotor code letter
21. Power factor
22. Maximum ambient temperature
23. Read installation manual
24. Notified body, only for EN-approved Ex products

Figure 1: The data plate

2.3 Product denomination

Reading instruction

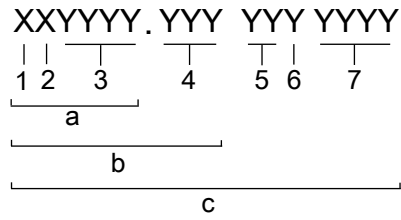
In this section, code characters are illustrated accordingly:

X = letter

Y = digit

The different types of codes are marked up with a, b and c. Code parameters are marked up with numbers.

Codes and parameters

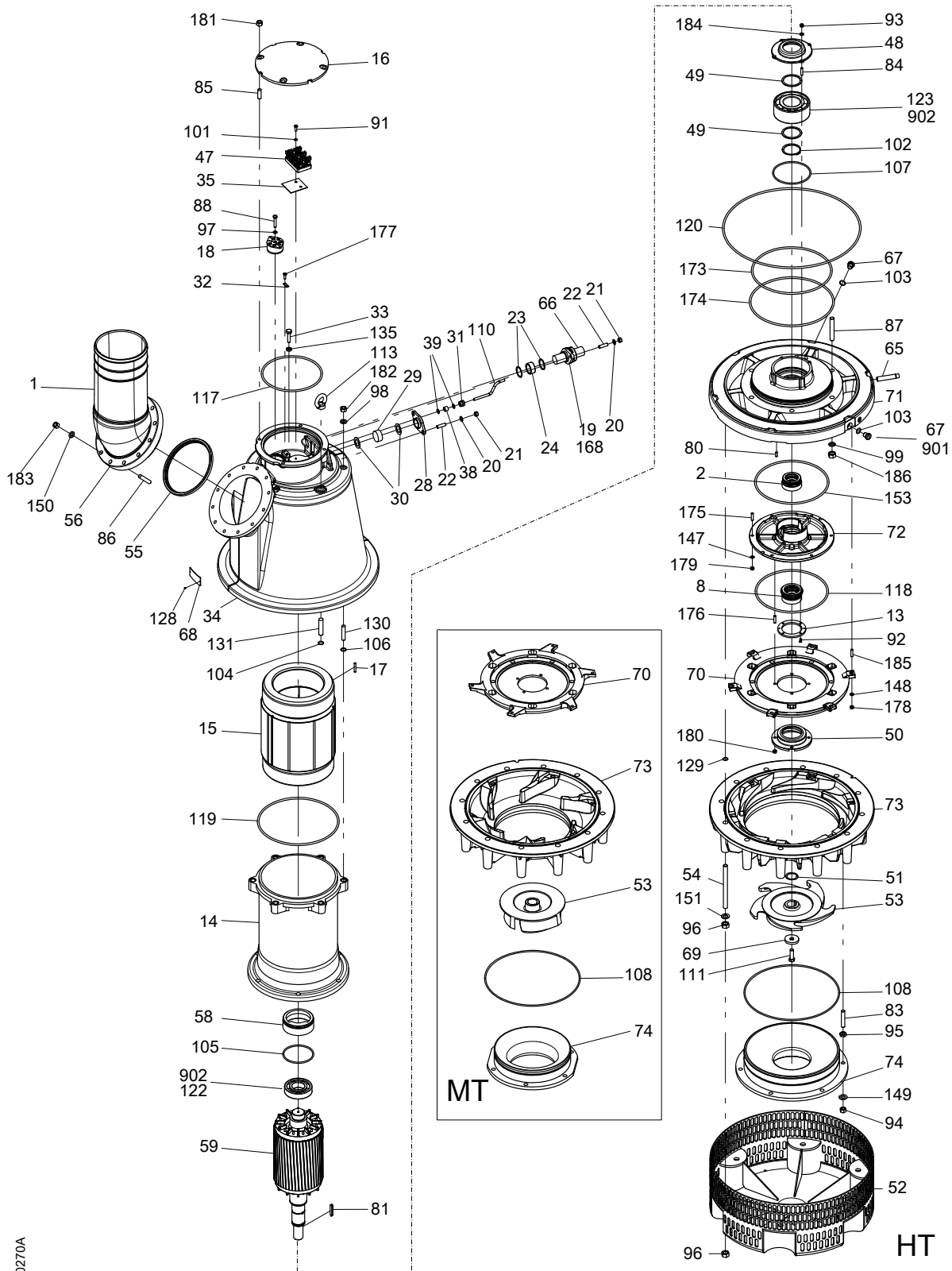


WS006265B

Type of Callout	Number	Indication
Type of code	a	Sales denomination
	b	Product code
	c	Serial number
Parameter	1	Hydraulic end
	2	Type of installation
	3	Sales code
	4	Version
	5	Production year
	6	Production cycle
	7	Running number

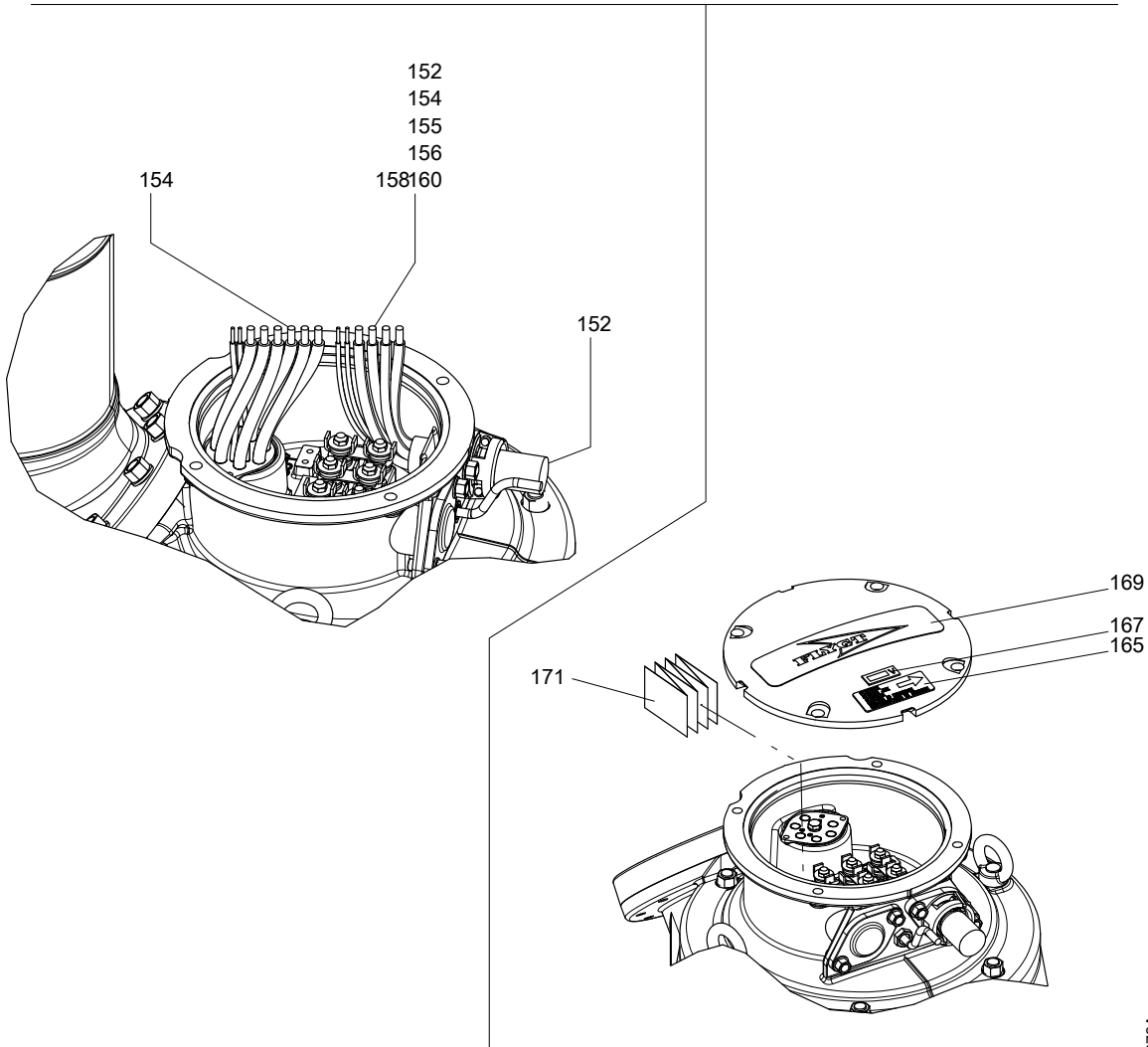
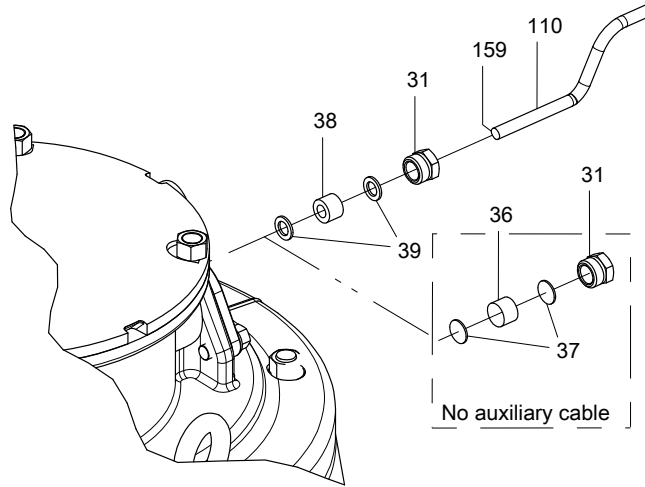
3 Exploded View

3.1 2250.011



20270A

3.2 Cable entry, connection housing, and labels



20272A

4 Spare Parts

4.1 2250.011

Pos. No	Part. No	Denomination	Qty/Version
			011
1	285 49 00	Discharge connection 8" DN 200 Hose	1
1	287 55 00	Discharge connection 8" NPT DN 200 Thread : NPT 8-8 Inner	1
1	280 57 00	Discharge connection 10" DN 250 Hose	1
1	287 56 00	Discharge connection 10" NPT DN 250 Thread : NPT 10-8 Outer	1
1	280 55 00	Discharge connection DN150 DN 150 Hose	1
1	280 56 00	Discharge connection 6" NPT DN 150 Thread : NPT 6-8 Inner	1
1	280 56 01	Discharge connection R 6" DN 150 Thread : ISO G6 Inner Quick coupling: Storz	1
2	683 14 31	Mechanical seal WCCR/WCCR FPM	1
8	683 14 06	Mechanical seal WCCR/WCCR FPM	1
13	274 83 00	Supporting washer	1
14	394 90 00	Stator housing	1
15	319 98 34	Stator 35-28-4a	1
		6-leads 3-phase 50 Hz 4-poles 220V-230V D 380V-400V Y P2=54kW	
		6-leads 3-phase 60 Hz 4-poles 260V D 440V-460V Y P2=65kW/87hp	
15	319 98 38	Stator 35-28-4a	1
		6-leads 3-phase 50 Hz 4-poles 380V-400V D 660V-690V Y P2=54kW	
		6-leads 3-phase 60 Hz 4-poles 440V-460V D P2=65kW/87hp	
15	319 98 44	Stator 35-28-4a	1
		6-leads 3-phase 50 Hz 4-poles 400V-440V D P2=54kW	
		6-leads 3-phase 60 Hz 4-poles 480V D P2=65kW/87hp	
15	319 98 30	Stator 35-28-4a	1
		6-leads 3-phase 60 Hz 4-poles 380V D P2=65kW/87hp	
15	319 98 35	Stator 35-28-4a	1
		6-leads 3-phase 50 Hz 4-poles 346V-350V D P2=54kW	
15	319 98 39	Stator 35-28-4a	1
		6-leads 3-phase 60 Hz 4-poles 460V D P2=65kW/87hp	
15	319 98 52	Stator 35-28-4a	1
		6-leads 3-phase 50 Hz 4-poles 500V-550V D P2=54kW	
		6-leads 3-phase 60 Hz 4-poles 575V-600V D P2=65kW/87hp	
15	319 98 28	Stator 35-28-4a	1
		6-leads 3-phase 50 Hz 4-poles 190V-200V D P2=54kW	
		6-leads 3-phase 60 Hz 4-poles 200V-220V D 380V Y P2=65kW/87hp	
15	319 98 40	Stator 35-28-4a	1
		6-leads 3-phase 50 Hz 4-poles 400V D P2=54kW	
		6-leads 3-phase 60 Hz 4-poles 400V D P2=65kW/87hp	

Pos. No	Part. No	Denomination	Qty/Version
			011
15	319 98 50	Stator 35-28-4a 6-leads 3-phase 50 Hz 4-poles 500V D P2=54kW 6-leads 3-phase 60 Hz 4-poles 575V D P2=65kW/87hp	1
15	319 98 55	Stator 35-28-4a 6-leads 3-phase 50 Hz 4-poles 550V D 1000V Y P2=54kW	1
15	642 31 11	Stator 35-25-4a 12-leads 3-phase 60 Hz 4-poles 440V-460V DSER 380V Y// P2=63kW/ 84hp	1
16	280 04 00	Cover	1
17	80 23 58	Parallel pin 8X50	1
18	280 06 01	EI-lead through 6X + 4X	1
19	395 85 00	Cable entry unit No of cable entries: 1 (35)-37mm Thread : OD 53,4mm	1
19	394 77 09	Motor cable entr.uni No of cable entries: 1 (26)-35mm	1
19	394 77 08	Motor cable entr.uni No of cable entries: 1 (35)-42mm	1
19	394 77 09	Motor cable entr.uni No of cable entries: 1 (26)-35mm	2
19	394 77 08	Motor cable entr.uni No of cable entries: 1 (35)-42mm	2
20	82 35 21	Plain washer 10X18X2-A2-A 140	4
21	82 24 53	Hexagon nut 1/2 UNC-A2-70	4
22	81 02 13	Stud UNCX45-A2-70	4
23	82 40 71	Plain washer 39.5X52X2-A2-70	2
23	82 40 69	Plain washer 35.5X52X2-A2-70	2
23	82 40 78	Plain washer 26.5X52X2-A2-70	2
23	82 40 80	Plain washer 30.5X52X2-A2-70	2
23	82 40 81	Plain washer 32.5X52X2-A2-70	2
23	82 40 73	Plain washer 44.5X52X2-A2-70	2
23	82 40 79	Plain washer 28.5X52X2-A2-70	4
23	82 40 78	Plain washer 26.5X52X2-A2-70	4
23	82 40 80	Plain washer 30.5X52X2-A2-70	4
23	82 40 81	Plain washer 32.5X52X2-A2-70	4
23	82 40 69	Plain washer 35.5X52X2-A2-70	4
23	82 40 71	Plain washer 39.5X52X2-A2-70	4
23	82 40 73	Plain washer 44.5X52X2-A2-70	4
24	84 35 45	Seal sleeve (35)-37 MM CR	1
24	84 35 44	Seal sleeve (33)-35 MM CR	1
24	84 35 57	Seal sleeve (32)-34 MM CR	1
24	84 35 53	Seal sleeve (24)-26 MM CR	1
24	84 35 55	Seal sleeve (28)-30 MM CR	1
24	84 35 56	Seal sleeve (30)-32 MM CR	1
24	84 35 46	Seal sleeve (37)-39 MM CR	1
24	84 35 47	Seal sleeve (40)-42 MM CR	1
24	84 35 54	Seal sleeve (26)-28 MM CR	2
24	84 35 53	Seal sleeve (24)-26 MM CR	2
24	84 35 55	Seal sleeve (28)-30 MM CR	2
24	84 35 56	Seal sleeve (30)-32 MM CR	2

Pos. No	Part. No	Denomination	Qty/Version
			011
24	84 35 44	Seal sleeve (33)-35 MM CR	2
24	84 35 57	Seal sleeve (32)-34 MM CR	2
24	84 35 45	Seal sleeve (35)-37 MM CR	2
24	84 35 46	Seal sleeve (37)-39 MM CR	2
24	84 35 47	Seal sleeve (40)-42 MM CR	2
28	305 83 00	Cover	1
29	305 84 00	Plug	1
30	82 40 81	Plain washer 32.5X52X2-A2-70	2
31	305 98 00	Gland screw M24 x 2	1
32	303 09 00	Earthing plate FM/PTB	6
33	395 87 00	Hexagon head screw	1
34	395 91 02	Outer casing	1
35	396 45 00	Insulating plate	1
36	282 95 00	Plug	1
37	282 96 00	Plate 20.5X21.5	2
38	84 35 25	Seal sleeve (10)-12 MM CR	1
39	82 40 50	Plain washer 12.5X20.5X2-A2-70	2
47	280 17 01	Terminal board unit	1
48	280 21 00	Bearing cover	1
49	280 25 00	Supporting washer	2
50	280 31 00	Wear protect.compl.	HT
50	280 31 01	Wear protect.compl.	MT
51	280 46 02	Adjusting washer 0.5 MM A4	10
52	280 47 00	Strainer unit	1
53	531 53 00	Impeller	MT 50Hz 3-phase Maximum temperature 40 DC Curve code: 431
53	531 54 00	Impeller	MT 50Hz 60Hz 3-phase Maximum temperature 40 DC Curve code: 432
53	485 35 00	Impeller	HT 50Hz 60Hz 3-phase Maximum temperature 40 DC Curve code: 433
53	518 85 00	Impeller	HT 50Hz 60Hz 3-phase Maximum temperature 40 DC Curve code: 434
54	280 52 00	Stud	12
55	280 53 00	Seal ring	1
56	280 54 00	Connection flange	1
58	280 59 01	Bearing housing	1
59	345 48 01	Shaft unit	35-28-4A
59	345 48 04	Shaft unit	35-25-4A
65	391 39 00	Pipe	1
66	94 19 93	Motor cable subcab S3X16+3X16/3+S(4X0.5)	Power cable x 2 24 - 26mm Star delta possible
66	94 19 83	Motor cable subcab 4G25+S(2X0.5)	Power cable x 1 32 - 34mm Power cable x 2 32 - 34mm Star delta possible

Pos. No	Part. No	Denomination	Qty/Version
			011
66	94 19 84	Motor cable subcab 4G35+S(2X0.5) Power cable x 1 35 - 37mm Power cable x 2 35 - 37mm Star delta possible	*
66	94 21 11	Motor cable 1AWG/3-2-1-GC Power cable x 1 40,70 - 42,70mm	*
67	283 13 01	Slotted head screw	3
68	630 68 00	Data plate USE 6306801 AS SPARE PART	1
69	382 10 00	Plain washer 17X65X10	1
70	285 25 00	Diffuser disc MT Diffusor material: NBR	1
70	285 25 01	Diffuser disc MT Diffusor material: Polyurethane rubber (PU)	1
70	285 34 01	Diffuser disc HT Diffusor material: NBR	1
70	285 34 02	Diffuser disc HT Diffusor material: Polyurethane rubber (PU)	1
71	391 38 00	Bearing housing	1
72	285 28 00	Bearing hous.cover	1
73	285 29 00	Diffuser coat. MT Diffusor material: NBR	1
73	285 29 01	Diffuser coat. MT Diffusor material: Polyurethane rubber (PU)	1
73	285 36 00	Diffuser coat. HT Diffusor material: NBR	1
73	285 36 01	Diffuser coat. HT Diffusor material: Polyurethane rubber (PU)	1
74	320 65 00	Suction cover MT Diffusor material: NBR	1
74	320 65 01	Suction cover MT Diffusor material: Polyurethane rubber (PU)	1
74	379 83 01	Suction cover HT Diffusor material: NBR	1
74	379 83 02	Suction cover HT Diffusor material: Polyurethane rubber (PU)	1
80	80 30 50	Parallel pin 8X24	1
81	80 75 91	Parallel key 12X8X63-A4	1
82	83 19 37	Coupling part STORTZ ISO G6A	1
83	80 87 96	Stud	6
84	81 01 89	Stud UNCX38-A2-70	6
85	81 02 34	Stud UNCX50-A2-70	4
86	81 02 40	Stud UNCX80-A2-70	12
87	81 02 69	Stud UNCX125A2-70	6
88	81 41 37	Hexagon head screw M10X55-A2-70	1
91	81 76 48	Slotted head screw UNCX25-2343	2
92	81 95 52	Slotted head screw UNCX16-2343	4
93	82 24 52	Hexagon nut 3/8 UNC-A2-70	4
94	82 24 54	Hexagon nut UNC-A2-70	6
95	82 25 79	Hexagon nut UNC-2332	6
96	82 24 55	Hexagon nut UNC-A2-70	18
97	82 34 25	Plain washer 10X18X2-A4-140HV	1
98	82 35 23	Plain washer 17X30X3-A2-170HV	4
99	82 35 26	Plain washer 21X37X3-A2-170HV	6
101	82 48 61	Spring washer DIN 128-A-8-A2	2

Pos. No	Part. No	Denomination	Qty/Version
			011
102	82 59 24	Retaining ring SGA 80	1
103	82 73 91	O-ring 22.2X3 NBR	3
104	82 73 90	O-ring 19.2X3 NBR	2
105	82 74 19	O-ring 134.3X5.7 NBR	1
106	82 76 85	O-ring 17X3 NBR	4
107	82 74 87	O-ring 169.3X5.7 NBR	1
108	82 75 05	O-ring 339.3X5.7 NBR	MT 1
108	82 75 09	O-ring 419.3X5.7 NBR	HT 1
110	94 20 76	Control cable subcab 2X1,5	*
111	81 59 86	Hexagon head screw UNCX51-2332	1
113	82 31 03	Lifting eye nut 3/4 UNC	2
117	82 78 50	O-ring 260.0X8.0 NBR	1
118	82 78 65	O-ring 310X8 NBR	1
119	82 78 75	O-ring 360.0X8.0 NBR	3
120	82 78 95	O-ring 580.0X8.0 NBR	1
122	83 33 16	Ball bearing 60X130X31	1
123	83 37 07	Ball bearing 80X170X68.3	1
125	83 42 65	Terminal block 600V/20A UL	2
128	82 20 88	Drive screw 4X5-A2/A4	8
129	82 73 89	O-ring 17.3X2.4 NBR	12
130	81 02 40	Stud UNCX80-A2-70	4
131	81 02 62	Stud UNCX90-A2-70	2
135	82 50 65	Sealing washer	1
140	284 43 01	Suction flange unit	1
147	82 34 25	Plain washer 10X18X2-A4-140HV	6
148	82 34 25	Plain washer 10X18X2-A4-140HV	6
149	82 35 23	Plain washer 17X30X3-A2-170HV	6
150	82 35 23	Plain washer 17X30X3-A2-170HV	12
151	82 35 26	Plain washer 21X37X3-A2-170HV	12
152	82 70 86	Cap 6X16 MM PVC	2
152	82 97 76	Cap 26X45 MM PVC	2
152	82 70 87	Cap 7X16 MM PVC	1
152	82 97 73	Cap 23X45 MM PVC	1
152	82 70 87	Cap 7X16 MM PVC	2
152	82 97 73	Cap 23X45 MM PVC	2
152	82 70 89	Cap 9X20 MM PVC	1
152	82 97 80	Cap 30X45 MM PVC	1
152	82 97 60	Cap 10X20 MM PVC	1
152	82 97 84	Cap 35X45 MM PVC	1
152	82 70 88	Cap 8X16 MM PVC	1
152	82 97 81	Cap 32X45 MM PVC	1
152	82 70 88	Cap 8X16 MM PVC	2
152	82 97 80	Cap 30X45 MM PVC	2
152	82 97 60	Cap 10X20 MM PVC	2

Pos. No	Part. No	Denomination	Qty/Version
			011
152	82 97 84	Cap 35X45 MM PVC	2
153	82 78 65	O-ring 310X8 NBR	1
154	83 42 34	End sleeve 25 MM2; L=15 MM	6
154	83 42 20	End sleeve (1.5)-2.5 MM2; L=6.9MM	2
154	83 42 38	End sleeve 1.5 MM2; L=7 MM	2
154	83 42 39	End sleeve 16 MM2; L=12 MM	3
154	83 42 34	End sleeve 25 MM2; L=15 MM	2
154	83 42 39	End sleeve 16 MM2; L=12 MM	6
154	83 42 34	End sleeve 25 MM2; L=15 MM	4
154	83 42 30	End sleeve 6 MM2; L=10 MM	2
154	83 42 34	End sleeve 25 MM2; L=15 MM	1
154	83 42 39	End sleeve 16 MM2; L=12 MM	1
154	83 42 34	End sleeve 25 MM2; L=15 MM	8
155	83 42 62	Closed-end splice 0.33-0.82 (AWG 22-18)	2
155	83 44 24	Closed-end splice 3-6 (AWG 12-10)	2
156	83 43 60	Cable lug UL/CSA 0.50-1.65 MM2 M4	2
156	83 43 60	Cable lug UL/CSA 0.50-1.65 MM2 M4	1
156	83 43 60	Cable lug UL/CSA 0.50-1.65 MM2 M4	3
157	83 45 51	Cable tie 200X4.8	5
158	93 00 78	Shrink hose ID=9.5 MM	*
159	94 03 30	Shrink hose ID=12 MM	*
160	94 03 33	Shrink hose ID=3.2 MM	*
160	94 03 34	Shrink hose ID=6.4 MM	*
165	340 71 00	Instruction plate	1
167	427 13 00	Marking tape	1
168	433 47 04	Plate 52x0.5	1
169	667 40 01	Sticker	1
170	681 58 00	Plate SENSOR CONNECTED T1-T2	2
171	775 13 04	Connection plate	1
172	83 02 60	Hex.socket hd screw M4X6-A4-70	1
175	81 01 89	Stud UNCX38-A2-70	4
176	81 01 89	Stud UNCX38-A2-70	6
177	81 76 48	Slotted head screw UNCX25-2343	6
178	82 24 52	Hexagon nut 3/8 UNC-A2-70	6
179	82 24 52	Hexagon nut 3/8 UNC-A2-70	6
180	82 24 52	Hexagon nut 3/8 UNC-A2-70	4
181	82 24 54	Hexagon nut UNC-A2-70	4
182	82 24 54	Hexagon nut UNC-A2-70	4
183	82 24 54	Hexagon nut UNC-A2-70	12
184	82 34 25	Plain washer 10X18X2-A4-140HV	4
185	81 01 89	Stud UNCX38-A2-70	4
186	82 24 55	Hexagon nut UNC-A2-70	6
800	723 78 00	O-ring kit	1
		NBR	

Pos. No	Part. No	Denomination	Qty/Version
			011
810	514 15 22	Rebuilding kit	1
810	514 15 23	Rebuilding kit	1
900	601 90 07	Basic repair kit	1
		TUNGSTEN CARBIDE - TUNGSTEN CARBIDE TUNGSTEN CARBIDE - TUNGSTEN CARBIDE	
901	90 17 52	Oil ISO VG 32	*
902	90 20 54	Grease	*



ООО «Бауманс Груп» - официальный партнер фирмы Flygt в России.

Тел: +7 495 121 49 50

Эл. почта: info@baumgroup.ru

Сайт: www.baumgroup.ru